

# Creek Side



Situated in a picturesque mountain valley of Eastern Oregon a new RV company is born. The focus of this company is to design RV's for the NW and Western Canada, merchandise the products with a hand selected group of dealers with the end goal of having our customers enjoy an Outdoor experience like no other.

The NW and Western Canada will be the targeted area for the products produced here. This area has an incredible percentage of people that enjoy the RV lifestyle and why wouldn't they with the Outdoors right outside most people's backdoor. Our goal is not to be the largest manufacturer in the country nor follow market share graphs. We simply want to design and build great RV's. The management team for this new RV company has over 160 years of combined RV experience. Here are a few examples:

Jim Croxton – General Manager (26 Years)  
 Darin Nelson – Sales Manager/US Sales (17 Years)  
 Rod Glass – Canadian Sales Manager (24 Years)  
 Donald Cochran – Regional Sales Manager (15 years)  
 Robin Larsen – Training/Sales (19 Years)  
 Rick Ewing – Service Manager (31 Years)  
 Terry Fischer – Production Manager (30 Years)  
 Paul Christensen – Purchasing Manager (34 Years)  
 Rick Hudson – Asst Production Manager (26 Years)  
 Karen Evans – Sales Administrator (8 Years)

We look forward to producing an excellent product for you and your family to use in the Outdoors – please feel free to visit us anytime – we would love to meet you!

Outdoors RV Manufacturing is a division of Northwood Manufacturing Incorporated

Your Local Outdoors RV Dealer is:



PO BOX 1047 Phone 541.624.5500  
 62582 Pierce Road Fax 541.963.2448  
 La Grande, OR 97850 www.outdoorsrvmfg.com

Nov. 2010 - Product information is accurate as of the date of publication of this brochure. Outdoors RV is continuously improving product design features, materials, components and these items are subject to change without notice or obligation to Outdoors RV.



# CreekSide

Welcome to the Outdoors!



New Hardwall Design

## Creek Side

"Where to Escape from the Everyday"

- \*\*\* Roto-Torqued Outdoors Tough Cabinetry
- \*\*\* One Step Electric Awning w/ Rain Dump Arm
- \*\*\* Custom Built Off Road Chassis
- \*\*\* Goodyear Radial Tires – Safety/Warranty
- \*\*\* Beaufloor Outdoors Tough Flooring



## Creek Side



**THE BATHROOM** – Designed by true RV'ers...notice the residential shower surround tub walls, bath skylight, built in medicine cabinet, and even a hairdryer like you see in many of today's hotels...our bathroom's even come with heat ducts for those chilly mornings...



**THE BEDROOM** – In most models you will find two shirt wards, two plug-ins, and granite designed countertops on both sides of the bed...every customer will use these on each trip...glasses, cup of coffee, book, and the list goes on...add in the standard pillow top mattress and you will sleep like you did as a kid your first night out!



**26RKS** – One of our most popular models and you can see why...front walkaround queen bed, center entertainment center with optional 26" swivel LCD TV with home theatre system (includes surround sound speakers and sub-woofer), incredible kitchen for storage and counter space, large super slide out for that all important elbow room, and two bunks in the back for the kids...perfect floorplan to spend your precious vacation time in the Outdoors!

Everyone deserves to enjoy the Outdoors with family & friends... Take one look at the inside of a 2011 CreekSide and you will see that this is the perfect place to "Escape from the Everyday". From the beautifully appointed wood grain flooring to granite designed countertops...the Outdoors never looked so good!



**THE KITCHEN** – Large 22" range (select models), stainless steel backsplash, knife rack, Larger Norcold 6.3 cu ft fridge with hardwood front panels, 3 XL full extension metal drawer guides, spice rack, touchless stainless steel garbage can, rechargeable flashlight/nightlight and the list goes on...add in the standard flip up counter (NA 23RKS), sink lids, and range cover and you will find the counter space in all CreekSide's to be close to home so you can truly enjoy the Outdoors!

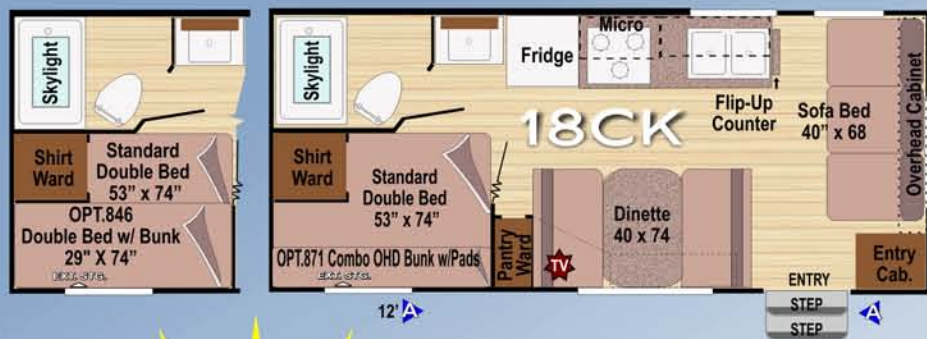


**THE DINETTE** – Notice the day & night shades and panoramic dinette window...5" dinette cushions (comfort is the key), and yes do not forget the Eco-Friendly dinette construction – Outdoors RV utilizes recycled laminated fiberglass wall cutouts for added strength and durability for years to come.



**THE LIVING ROOM** – Notice the residential style sofa and throw pillows...so comfortable that you will need to sit on it to really appreciate it...The Beaufloor Outdoors Tough Flooring is a standard feature in every CreekSide – not only does this flooring look great it has a Cold Cracking Warranty for 2 Years down to 50 Below Zero. Since we are active users of the products here at Outdoors RV we know how important storage is...we designed a dinette storage system into every dinette (Large full extension drawers under both dinette benches – 1 on the 21CKS model due to slide-out)

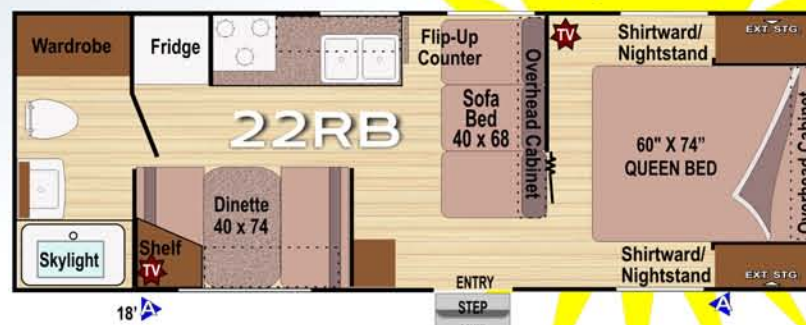




Revised Floorplan



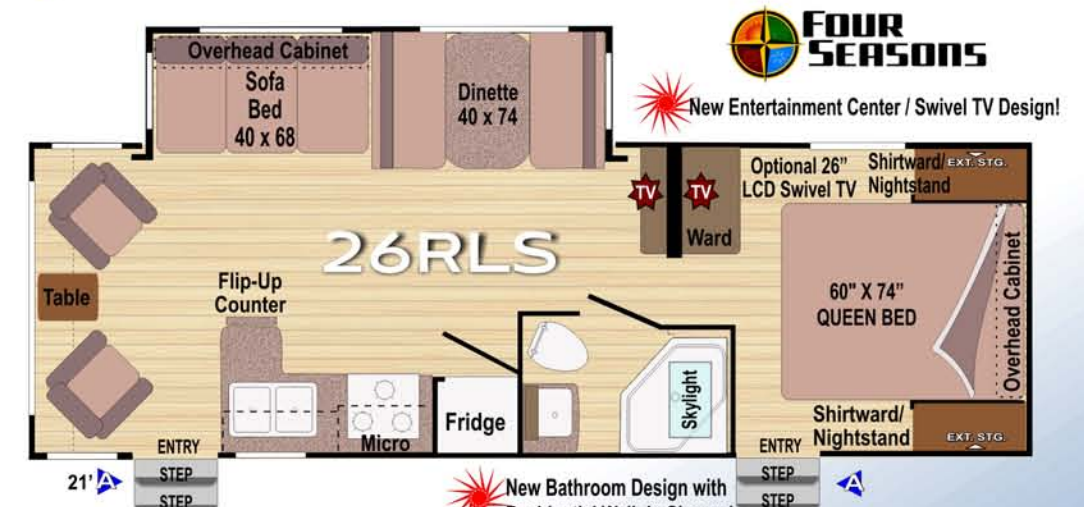
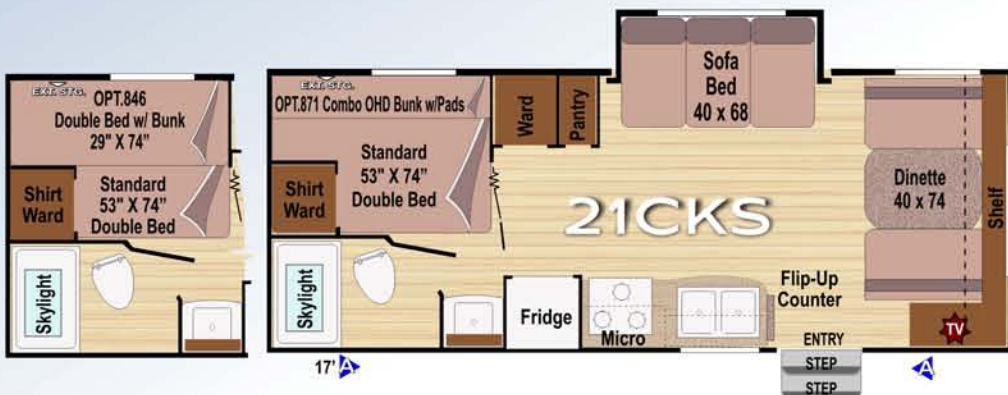
New Floorplan



Creek Side



Length' Indicates full length electric awning w/rain dump arm.



Double Insulation Standard on ALL Models

Indicates pre-wired locations where TV's can be installed

Creek Side

Dimensions & Capacities

	18CK	20FQ	22RB	24BH	21CKS	23RKS	26BKS	26RLS
Full Featured Dry Weight (lbs)	4150	4300	4600	4650	4900	6000	6350	6350
Cargo Carrying Capacity (lbs)	1650	1600	1600	1550	1700	1700	1750	1750
Hitch Dry Weight (lbs)	500	410	485	505	525	620	710	710
Maximum Trailer Weight (lbs)	5800	5900	6200	6200	6600	7700	8100	8100
Length (including hitch)	22'3"	23'9"	26'3"	26'8"	24'8"	27'6"	29'3"	29'1"
Fresh Water Holding Tank (gal)	56	56	56	56	56	56	56	56
Grey Water Holding Tank (gal)	40	40	40	40	40	40/40	40	40
Black Water Holding Tank (gal)	40	40	40	40	40	40	40	40
Propane Capacity (lbs)	60	60	60	60	60	60	60	60
Heavy Duty 5 Lug Axles (lbs)	3500 (2)	3500 (2)	3500 (2)	3500 (2)	3500 (2)			
Heavy Duty 6 Lug Axles (lbs)						5200 (2)	5200 (2)	5200 (2)
Goodyear Tire Size (load range)	ST205/75 15C	ST205/75 15C	ST205/75 15C	ST205/75 15C	ST205/75 15C	ST225/75 15D	ST225/75 15D	ST225/75 15D

\*All dry weights are calculated on full featured production units  
 \*Verify the towing capacity of your tow vehicle. If you don't know or aren't sure, you can ask your automotive dealership or contact your tow vehicle manufacturer.  
 \*All weights above are average approximations and may vary. Weights are calculated before adding options.  
 \*Specifications are subject to change without notice.

Standard

Interior - Throughout

- \* Norcold 6.3 Cu Ft Fridge with Hardwood Front Panels
- \* Eco Friendly Battery Disconnect
- \* Beauflor "Outdoors Tough" Flooring - 7 Layers - Cold Cracking to 50 Below Zero
- \* Roto-torqued "Outdoors Tough" Real Wood Cabinetry (all face frame cabinets)
- \* Touchless Stainless Steel Garbage Can
- \* Dinette Drawer System (1 Drawer on 21CKS)
- \* XL Full Extension Metal Drawer Guides (all drawers)
- \* Two Tone Day / Night Shades - Living Room & Bedroom
- \* Slide-Out Overhead Cabinets (where applicable)
- \* Hardwood Slide-Out Corner Plinths
- \* Slide-Out End Wall Windows (26BKS, 26RLS)
- \* Comfort Style Furniture with Sofa Throw Pillows
- \* Microwave, TV Ant, CD Player
- \* Coleman 13.5 A/C (21CKS, 23RKS, 26BKS, 26RLS)
- \* DSI Water Heater with Bypass System
- \* Forced Air-Direct Spark Ignition Furnace w/ Thermostat
- \* Welcome to the Outdoors Entry Mat
- \* Eco Friendly Dinette Construction
- \* 5" Thick - High Density Foam Dinette Cushions

Galley

- \* 22" Range (NA 18CK, 20FQ)
- \* Stainless Steel Backsplash & Knife Rack
- \* Rechargeable Flashlight / Night-light
- \* Granite Designed Counter-tops
- \* Range Cover / Dual Sink Covers
- \* Flip Up Counter Extension (where applicable)
- \* Range Hood w/ 12V Light & Exhaust Fan
- \* Hi-Rise Kitchen Faucet

Bedroom

- \* Pillowtop Mattress
- \* Bedroom Pillows
- \* Strut-Assisted Lift-Up Bed Platform with Below Bed Storage (most models)
- \* Real Wood Bed Construction
- \* Dual Night-Stands, Shirt Wards, and Plug-ins (where applicable)

Bath

- \* Wall Mounted Hair Dryer
- \* Porcelain Toilet
- \* Residential Surround Tub Walls
- \* Towel Bar(s)
- \* Shower Skylight
- \* Wall Switched Ceiling Light
- \* Medicine Cabinet
- \* Residential Walk-In Shower with Glass Enclosure (26RLS)
- \* Heat Duct

Safety/Convenience

- \* 26" Wide Main Entry Door w/ Window
- \* 4-Wheel Electric Brakes
- \* Break-Away Emergency Disconnect Brake
- \* Carbon Monoxide Detector/Alarm
- \* Fire Extinguisher
- \* Flush Mount Entry Door Latch w/ Deadbolt Lock
- \* Patio Light w/ Interior Switch
- \* Propane Detector/Alarm
- \* Retractable Entry Step w/ Non Skid Strip
- \* Smoke Detector/Alarm

Exterior - Throughout

- \* Double High Front Diamond Plate
- \* Double Layer Fiberglass Insulation (all Models)
- \* Four Seasons Package (23RKS, 26BKS, 26RLS)
- \* Laminated Fiberglass Slide-Out Floor Construction
- \* Eco Friendly Battery Saving Roof Mounted Solar Panel
- \* True Full Size Outdoor Style BBQ Hookup Bib & Hose (BBQ sold separately)
- \* One Step Electric Awning with Rain Dump Arm

- \* 15" GoodYear Radial Approved Tires & Spare Safety/Warranty (225 - Heavy Ply D Range on 23RKS, 26BKS, 26RLS)
- \* Custom Built Off Road Chassis
- \* Mud Flaps
- \* Rugged A Frame - Protected Junction Box Wiring
- \* Diamond Plate Wrap Bumper
- \* Extra Ground Clearance Straight Axles with Easy Lube Hubs
- \* Heavy Duty 5 Lug 3500 LB Axles with Off Road Brake System (18CK, 20FQ, 24BH, 21CKS)
- \* Heavy Duty 6 Lug 5200 LB Axles with Off Road Brake System (23RKS, 26BKS, 26RLS)
- \* Off Road Clearance Lights
- \* Nut Driven Scissor Jacks (all 4 corners)
- \* Radius Crowned Full Walk On Roof with Ladder (Ladder NA 20FQ)
- \* Dual 30# LP Tanks with Flip-Top Cover
- \* Metal Entry Door Catches
- \* Cooler Sized Luggage Door Compartments (where applicable)
- \* Black Tank Flush
- \* Exterior Shower
- \* Exterior Speakers
- \* Tinted Windows
- \* Radius Smooth Fiberglass Entry Doors
- \* Radius Smooth Fiberglass Luggage Doors
- \* Bunk Garage Door (24BH, 26BKS)
- \* Front Window (18CK, 21CKS)

Options

- \* CSA -
- \* 19" LCD TV with Home Theatre (21CKS, 23RKS)
- \* 26" Swivel LCD TV with Home Theatre (26BKS, 26RLS)
- \* Gas/Electric Water Heater (21CKS, 23RKS, 26BKS, 26RLS)
- \* Coleman 13.5 A/C (18CK, 20FQ, 24BH)
- \* Double Bed with Bunk & Window (18CK, 21CKS)
- \* Combo Overhead Bunk Cabinet with Pads & Window (18CK, 21CKS)
- \* As of Sept 2010, All CreekSides will be built with Standard Hardwall option.



Prairie Dawn



Spring Meadow

Welcome to the Outdoors!



FOUR SEASONS

Standard on the 23RKS, 26BKS, 26RLS



In a 4 Seasons Outdoors RV, the entire chassis is enclosed from front to back for both insulation and protection from road debris.



We use Astro-foil (R-15) insulation along the entire length of the floor. Plus an additional wrap around the holding tanks.

The Industry Camping Standard:



The Industry Standard: Holding tank dump valves are not enclosed and are exposed to freezing.



The Industry Standard: A single layer of insulation.



The Industry Standard: No insulation in the slide-out floors.

The Industry Standard: Cold and Drafty. Not Designed for Northern Climates.

The Outdoors RV Camping Standard:



The Outdoors RV Standard: Our Dump Valves are located within the Enclosed / Heated underbelly to protect them from freezing.



The Outdoors RV Standard: Insulation is double layered for added protection.



The Outdoors RV Standard: The entire slide out floor is covered with Astro Foil / R-15 Insulation.

The Outdoors RV Standard: Warm in the Winter and Cool in the Summer. Perfect for colder Northern US and Canadian climates.

