

TIMBER Ridge



Situated in a picturesque mountain valley of Eastern Oregon a new RV company is born. The focus of this company is to design RV's for the NW and Western Canada, merchandise the products with a hand selected group of dealers with the end goal of having our customers enjoy an Outdoor experience like no other.

The NW and Western Canada will be the targeted area for the products produced here. This area has an incredible percentage of people that enjoy the RV lifestyle and why wouldn't they with the Outdoors right outside most people's backdoor. Our goal is not to be the largest manufacturer in the country nor follow market share graphs. We simply want to design and build great RV's. The management team for this new RV company has over 160 years of combined RV experience.

Here are a few examples:

Jim Croxton – General Manager (26 Years)
Darin Nelson – Sales Manager/US Sales (17 Years)
Rod Glass – Canadian Sales Manager (24 Years)
Robin Larsen – Training/Sales (19 Years)
Rick Ewing – Service Manager (31 Years)
Terry Fischer – Production Manager (30 Years)
Paul Christensen – Purchasing Manager (34 Years)
Rick Hudson – Asst Production Manager (26 Years)
Karen Evans – Sales Administrator (8 Years)

We look forward to producing an excellent product for you and your family to use in the Outdoors – please feel free to visit us anytime – we would love to meet you!

Outdoors RV Manufacturing is a division of Northwood Manufacturing Incorporated

Your Local Outdoors RV Dealer is:



PO BOX 1047 Phone 541.624.5500
62582 Pierce Road Fax 541.963.2448
La Grande, OR 97850 www.outdoorsrvvmfg.com

June 2010 - Product information is accurate as of the date of publication of this brochure. Outdoors RV is continuously improving product design features, materials, components and these items are subject to change without notice or obligation to Outdoors RV.

TIMBER Ridge



"Your Outdoor Journey Awaits"

TIMBER Ridge



- *** Fiberglass Front Cap / Off-Road Chassis
- *** Electric Awning / LCD TV's
- *** Goodyear Radial Tires - Aluminum Wheels
- *** Laminated Fiberglass Sidewall Construction
- *** Roto-Torqued Outdoors Tough Cabinetry



TIMBER Ridge

"Your Outdoor Journey Awaits"



LIVING ROOM – Two tone day & night shades, comfort style sofa with throw pillows, slide-out cabinets with raised panel hardwood doors, 19"-26" LCD TV's with Home Theater System (DVD player, surround sound ceiling mount speakers, exterior speakers and sub-woofer), Outdoors Tough Flooring (Cold Cracking Warranty for 2 years down to 50 below zero), Roto-Torqued Outdoors Tough Cabinetry, and the list goes on...Since we are active users of the products we produce here at Outdoors RV we design every feature we put in the coach as if we were buying it ourselves...our sales manager owns a TimberRidge and takes it to the backcountry with his son whenever he gets a chance...



THE BATHROOM – Notice the residential style glass shower enclosure & skylight... taking a shower and brushing your teeth feels just like home in this bedroom bathroom suite arrangement...we have even added a wall mounted hairdryer just like you see in many hotels today – great customer idea!!



THE DINETTE – Notice the day & night shades and panoramic dinette window...5" dinette cushions, dinette storage system (2 XL full extension drawers – 1 on 24ORKS), and yes do not forget the Eco-Friendly dinette construction – Outdoors RV utilizes recycled laminated fiberglass wall cutouts for added strength and durability for years to come.

...with one look at the inside of a TimberRidge you will see that this is the ideal place to enjoy your favorite backcountry mountain range or high alpine lake. From the granite designed countertops to the beautifully appointed lodge style flooring...the Outdoors never felt so good!

270DBHS Bunk Design

Large oversized rear bunks (top bunk is rated at 350 lbs) so your family & friends can enjoy the Outdoors right along with you...the bottom bunk lifts up and out of the way for an amazing storage area for bikes, portable generators, kayaks, etc. The 2nd entry door opens up perfectly to load and unload this storage area plus makes for an excellent in an out of the trailer for bathroom use for the kids.

THE BEDROOM – in all TimberRidge models you will find two full size shirt wards with nightstands and drawers on both sides of the bed...excellent features for that all important cup of coffee in the morning or a place to set your glasses when time to relax under the stars on the comfortable pillow top mattress.



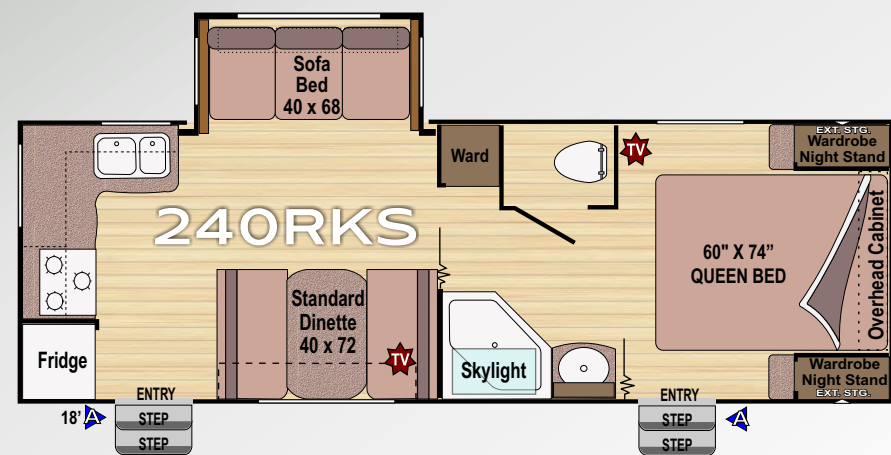
THE KITCHEN – Large 22" range, stainless steel backsplash, knife rack, XL fridge with hardwood front panels, 5 XL full extension metal drawer guides (one even being a pot & pan drawer), touchless stainless steel garbage can, rechargeable flashlight/nightlight and the list goes on...excellent counter & storage space make the TimberRidge 24ORKS kitchen a joy to use while relaxing in the Outdoors!



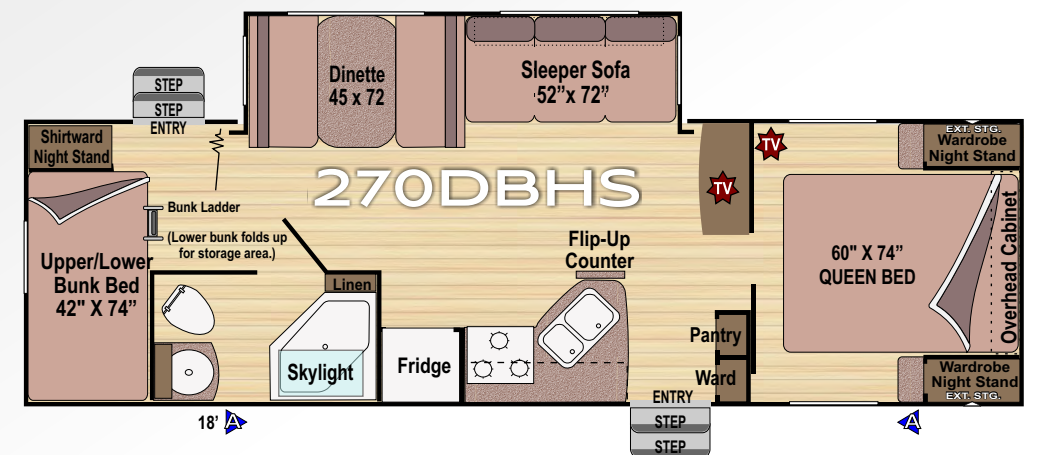
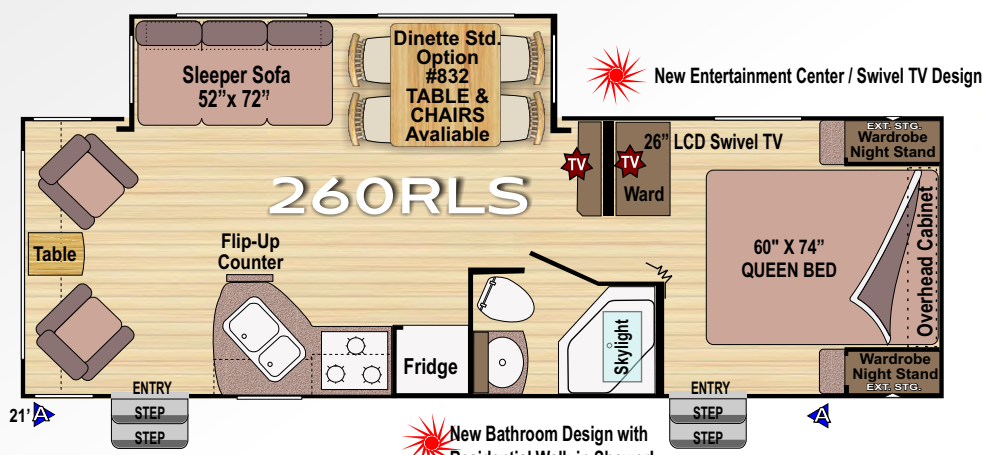
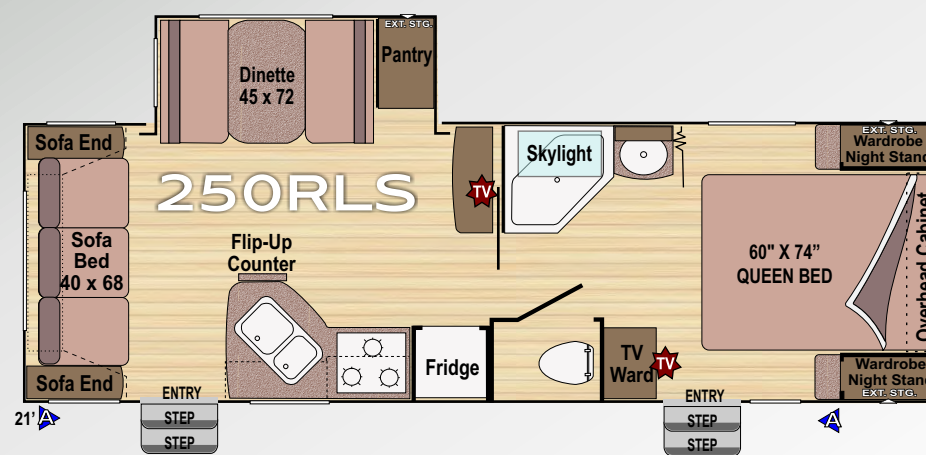
New
Floorplan



Length' Indicates full length electric awning w/rain dump arm.



Indicates pre-wired locations where TV's can be installed
All livingroom TV's are standard.



Coming
Soon

Exterior
Kitchen
Floorplan



Dimensions & Capacities

	240RKS	250RLS	260BHS	260RLS	270DBHS	3202BDS
Full Featured Dry Weight (lbs)	6050	6150	6550	6650	7000	8100
Cargo Carrying Capacity (lbs)	1850	1750	1450	1450	1500	1900
Hitch Dry Weight (lbs)	775	790	785	750	805	1125
Maximum Trailer Weight	7900	7900	8000	8100	8500	10000
Length (including hitch)	27'8"	28'11"	29'9"	28'11"	30'9"	35'2"
Fresh Water Holding Tank (gal)	56	56	56	56	56	56
Grey Water Holding Tank (gal)	40/40	40	40/40	40	40	40
Black Water Holding Tank (gal)	40	40	40	40	40	40
Propane Capacity (lbs)	60	60	60	60	60	60
Heavy Duty 6 Lug Axles (lbs)	5200 (2)	5200 (2)	5200 (2)	5200 (2)	5200 (2)	5200 (2)
Goodyear Tire Size (load range)	ST225/ 75 15D	ST225/ 75 15D	ST225/ 75 15D	ST225/ 75 15D	ST225/ 75 15D	ST225/ 75 15D

*All dry weights are calculated on full featured production units
*Verify the towing capacity of your tow vehicle. If you don't know or aren't sure, you can ask your automotive dealership or contact your tow vehicle manufacturer.
*All weights above are average approximations and may vary. Weights are calculated before adding options.
*Specifications are subject to change without notice.

Standard

Interior - Throughout
* 19-26" LCD TV with DVD Home Theatre System
* Surround Sound Ceiling Mount Speakers & Sub Woofer
* 6 Gal High Efficiency Gas/Electric Water Heater w/ Maximum Recovery Rate of 17.8 Gal Per Hour
* Norcold XL Fridge with Hardwood Front Panels
* Eco Friendly Battery Disconnect
* Beauflor "Outdoors Tough" Flooring - 7 Layers - Cold Cracking to 50 Below Zero
* Roto-torqued "Outdoors Tough" Real Wood Cabinetry (all face frame cabinets)
* Touchless Stainless Steel Garbage Can
* Dinette Drawer System
* XL Full Extension Metal Drawer Guides (all drawers)
* Two Tone Day / Night Shades - Living Room & Bedroom
* Slide-Out Overhead Cabinets
* Hardwood Slide-Out Corner Plinths
* Slide-Out End Wall Windows
* Comfort Style Furniture with Sofa Throw Pillows
* Comfort Style Sleeper Sofa (where applicable)
* Coleman 13.5 BTU A/C, Microwave, TV Ant
* Water Heater Bypass System
* Forced Air-Direct Spark Ignition Furnace w/ Thermostat

Welcome to the Outdoors
Entry Mat
* Eco Friendly Dinette Construction
* 5" Thick - High Density Foam Dinette Cushions

Galley
* 22" Range
* Stainless Steel Backsplash & Knife Rack
* Rechargeable Flashlight / Night-light
* Pot & Pan Drawer Under Range
* Granite Designed Countertops
* Range Cover / Dual Sink Covers
* Flip Up Counter Extension (where applicable)
* Range Hood w/ 12V Light & Exhaust Fan
* Hi-Rise Kitchen Faucet

Bedroom
* Residential Style Headboard Pillowtop Mattress
* Bedroom Pillows
* Strut-Assisted Lift-Up Bed Platform with Below Bed Storage
* Real Wood Bed Construction
* Dual Night-Stands, Shirt Wards, Plug-ins, and Drawers

Bath
* Residential Style Glass Shower Enclosure
* Wall Mounted Hair Dryer
* Porcelain Toilet
* Residential Surround Tub Walls

* Towel Bar(s)
* Shower Skylight
* Wall Switched Ceiling Light
* Medicine Cabinet

Safety/Convenience
* 120V GFI Circuit Protection (Galley/Bath/Patio)
* 4 Wheel Electric Brakes
* Break-Away Emergency Disconnect Brake
* Carbon Monoxide Detector / Alarm
* Entry Assist Handle
* Fire Extinguisher
* Propane Detector/Alarm
* Smoke Detector/Alarm
* Wall Mounted Systems Monitor Panel
* Water System Winterization Port
* Centralized Control Center

Exterior - Throughout
* Laminated Fiberglass Construction
* Laminated Fiberglass Slide-Out Floor Construction
* Fiberglass Front Cap
* Eco Friendly Battery Saving
* Roof Mounted Solar Panel
* "True Full Size Outdoor Style" BBQ Hookup Bib & Hose (BBQ sold separately)
* One Step Electric Awning with Rain Dump Arm
* 15" GoodYear Radial Approved Tires & Spare Safety/Warranty (225 - Heavy Ply D Range)
* Custom Built Off Road Chassis
* Mud Flaps

Options

* CSA - - -
* Dual Pane Windows
* Free Standing Dinette (260RLS, 3202BDS)
* Bunk Beds - Back Room (3202BDS)
* Bedroom Carpet



Interior Views



Welcome to the Outdoors!



FOUR SEASONS

Standard on All Models



In a 4 Seasons TimberRidge the entire chassis is enclosed from front to back for both insulation and protection from road debris.



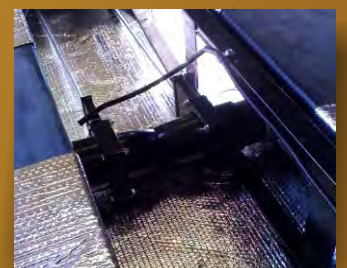
We use Astro-foil (R-15) insulation along the entire length of the floor. Plus an additional wrap around the holding tanks.

The Industry Camping Standard:

The Outdoors RV Camping Standard:



The Industry Standard: Holding tank dump valves are not enclosed and are exposed to freezing.



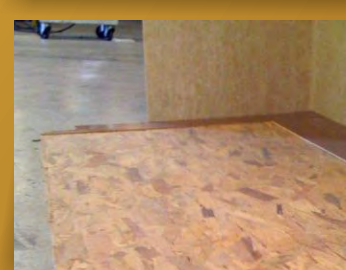
The Outdoors RV Standard: Our Dump Valves are located within the Enclosed / Heated underbelly to protect them from freezing.



The Industry Standard: A single layer of insulation.



The Outdoors RV Standard: Insulation is double layered for added protection.



The Industry Standard: No insulation in the slide out floors.



The Outdoors RV Standard: The entire slide out floor is covered with Astro Foil / R-15 Insulation.

The Industry Standard: Cold and Drafty, Not Designed for Northern Climates.

The Outdoors RV Standard: Warm in the Winter and Cool in the Summer, Perfect for colder Northern US and Canadian climates.

